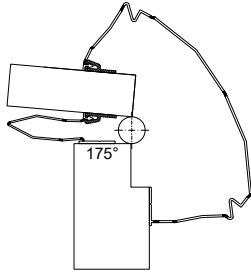
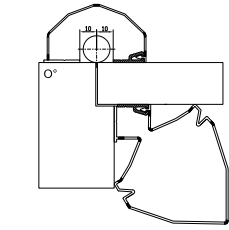
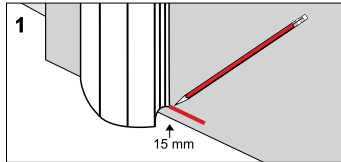


## SQUARE EDGE DOORS (NON-RABBETED)

### MAXIMUM OPENING 175°

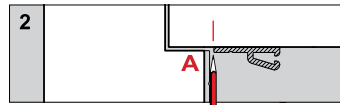


Draw a horizontal line (using a soft pencil) at a distance of 15 mm / .59" from the bottom edge of the door and extend it to the doorframe on both the push side and pull side of the door (see figure 1).

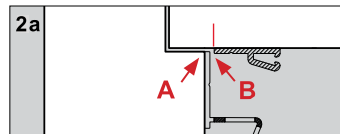


### WIDE PROFILE FOR THE PUSH SIDE OF THE DOOR

Shut the door and draw a vertical pencil line along the doorframe on the door using the frame to draw a straight line (see figure 2).



Peel off the backing from the tape of the wide strip first beginning at the bottom of the doorframe, stick it onto the drawn horizontal line. Make sure that the edge of the strip runs exactly in line with the edge of the doorframe. Press firmly (see figure 2a, position A).

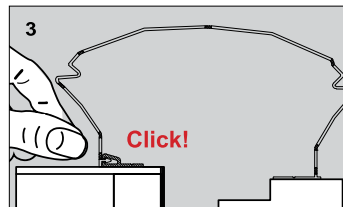


**Attention:** the door must never make contact with the strip fitted on the doorframe.

#### Click strip

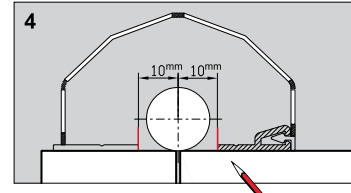
Peel off the backing of the tape and beginning at the bottom of the doorframe, apply it onto the drawn horizontal line, again making sure it is correctly in line. When the strip is parallel with the pencil line, stick the top end onto the door (pressing firmly). Ensure that the strips do not make contact with each other. (see figure 2a, position B).

Finally, open the door and click the strips together from top to bottom (see figure 3).



### NARROW PROFILE FOR THE PULL SIDE OF THE DOOR

Draw a vertical line at a distance of 10 mm / .39" from the axis of the hinge on both door and doorframe (see figure 4).



Close the door. Peel off the backing of the tape and then stick the narrow strip onto the doorframe, starting at the bottom on the drawn horizontal line 15 mm / .59" above the bottom edge.

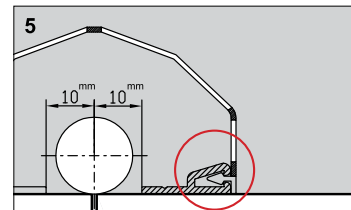
**Attention:** the flat edge of the narrow strip must be exactly parallel with the vertical line already drawn on the doorframe.

#### Click strip

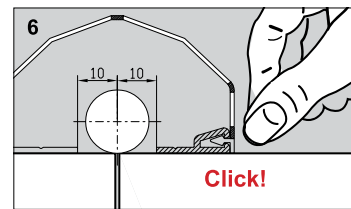
Close the door. Peel off the backing of the tape and then stick the click strip onto the door, starting at the bottom on the drawn horizontal line 15 mm / .59" above the bottom edge.

**Attention:** The click strip must be placed exactly along the drawn vertical line on the door.

The opening of the click strip must always face away from the hinge (see figure 5).



**Clicking the narrow strip into the click strip**  
After both the narrow and the click strip have been correctly fitted, the edge of the narrow strip can be clicked into the click strip starting at the top (see figure 6).



## INTRODUCTION

Whenever possible, use screws on wooden doors and doorframes. Tape is more suitable for doors made of other materials (metal, aluminium & PVC). Screws can be used in pre-drilled holes on the strips. For easy installation when using screws, it is better to first attach the strip with the tape. For a firm hold, place additional screws 3 cm from the bottom and the top of the strip.

Exposure to the elements, direct sun light and sub-zero temperatures can cause rapid deterioration making the plastic brittle and causing cracks in the plastic. We recommend not to expose the strips to the weather elements.

If a door opens further than stated in these instructions, for example through cantilever hinges that protrude beyond the door, the supplier cannot be held responsible for any damage which may arise from this. Using doorstoppers or door-closers can effectively limit the angle of opening.

Square edge door without strip on pull side:  
Maximum opening 180°

Square edge door with strip on pull side:  
Maximum opening 170°

Rabbeted door: Maximum opening 170°

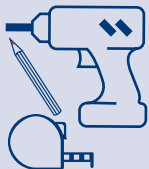
Aluminum, metal or plastic doors:  
Maximum opening 90°

Special doors: Maximum opening 20 cm (7.87") between the 2 strips.

Maximal door thickness: 7 cm (2.75")

## REQUIRED TOOLS FOR FITTING THE FINGER ALERT

- Drill
- Soft pencil
- Tape measure
- Cloth
- Degreasing agent



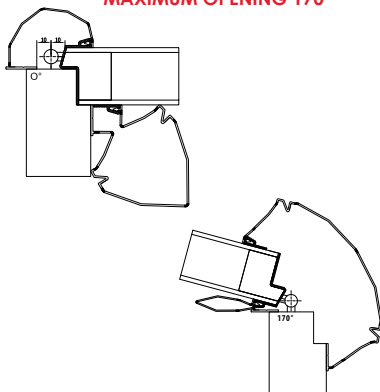
Screws ordered separately  
Roundhead screws 3.5 x 13mm.  
Only for use on wooden doors and frames.  
For metal, aluminium and PVC doors we recommend using tape.

## INCLUDED

- 2 click strips with tape
- 1 narrow strip for the pull side of the door
- 1 wide strip for the push side of the door

## RABBETED DOORS

### MAXIMUM OPENING 170°



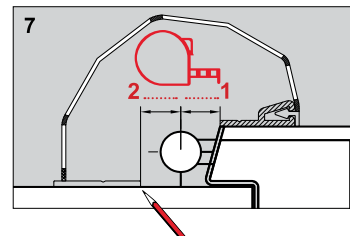
Draw a horizontal line 15 mm (.59") above the bottom edge of the door and extend it at the same height on the doorframe on both the push side and pull side (see figure 1).

### Pull side of door

Measure the distance between the edge of the rabbeted door and the axis of the hinge (see figure 7, position 1).

Using this same measurement taken from the centre line of the hinge to the doorframe, draw a vertical line on the doorframe (see figure 7, position 2).

Continue fitting as per instructions for "square edge doors".



## Instuction video

Please watch before instalation.



## FLAT DOORS AND FRAMES (METAL, ALUMINIUM AND PVC)

### USE OF TAPE

The door and doorframe must first be grease-free and dried. It is advised to lightly sand the contact surfaces of the door and doorframe for optimal adhesion. After sanding, the door and doorframe must be dusted.

To ensure correct and an optimal adhesion after mounting the strips on the door and frame, firmly rub the adhesive strips up and down for 2 minutes. Then close the door and do not open for at least 15 minutes.

### USE OF STRIPS

Our strips cannot withstand rough handling. Damage could occur if, for example, they are not handled correctly when removing for maintenance. In accordance with the intended safety standards, shortening the strips to less than 180 cm/71" is not recommended. The warranty is void if the strips are shortened.

#### Maintenance

The strips can be loosened at the top by carefully levering the strip open with a screwdriver. Once a small bit is pried loose the strip will come away easily. Clean with lukewarm water.

#### Warning

During the removal of strips installed with tape, surface damage of door and/or doorframe cannot be prevented; this is due to the strong adhesive strength that is necessary for permanent adhesion.

#### Disclaimer

Arte Viva BV shall not be responsible for any consequential, direct or indirect loss or damage suffered by any person or property, which is the result of a failure to install and/or use the strips as set forth in the above instructions, or based upon misuse, neglect or modification of the Finger Alert strips.

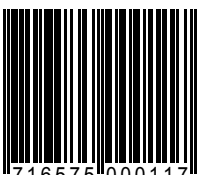
**Read the instructions first before fitting the strips!**



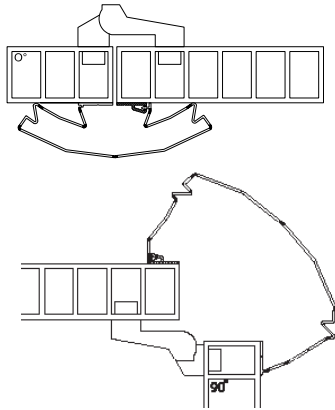
Children should never be left unsupervised. Parents should always be on their guard.

**arte viva**. child safety  
kindergartens and schools

Keulenaar 6b  
3961 NM Wijk bij Duurstede  
The Netherlands  
T +31 (0)343 57 69 54  
E info@arteviva.nl  
I arteviva.nl



### MAXIMUM OPENING 90°



We recommend using tape on metal, aluminium & PVC doors and frames. It is often not possible to fit the narrow strip because of a different hinge type, unless the narrow strip and click strip are cut and fitted above and below the unprotected hinge. We strongly advise against this!

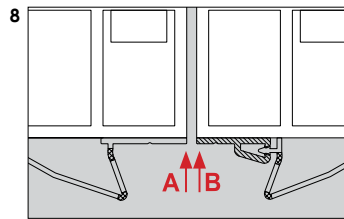
Draw a horizontal line at a distance of 15 mm / .59" measuring from the bottom edge of the door and extend the line to the doorframe. Do this on both the inside and hinge side of the door (see figure 1, other side).

### WIDE STRIP FOR THE PULL SIDE OF THE DOOR

Peel off the backing of the tape from the wide strip and first stick the lower end onto the horizontal pencil line drawn at the bottom of the door. Ensure that the flat edge of the strip runs exactly along the edge of the doorframe (see figure 8, position A).

Having made certain that the strip is exactly parallel with the edge of the doorframe, fix it into position by pressing firmly along the strip starting at the bottom and working upwards.

**Attention:** the door must not come into contact with the strip fixed onto the doorframe.



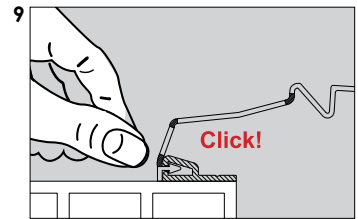
### CLICK STRIP FOR THE PULL SITE OF THE DOOR

Peel off the backing of the tape and first stick the lower end onto the horizontal pencil line drawn at the bottom of the door. Ensure that the edge of the strip runs exactly along the edge of the door (see figure 8, position B).

When the strip is exactly parallel with the edge of the door, fix it into position by pressing firmly along the strip starting at the bottom and working upwards.

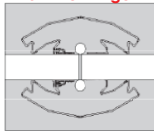
**Attention:** the doorframe and door must not come into contact with the strips fixed.

Lastly, click the strips together starting at the top and working downwards (see figure 9).

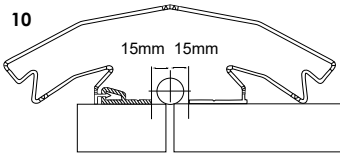


## SWING DOORS (2 WIDE AND 2 CLICK STRIPS ONLY!)

#### Bommer hinge



Draw a horizontal line at a distance of 15 mm / .59" from the bottom edge on the inside of the door and extend it to the doorframe of both sides of the door (see figure 1, other side).



### WIDE STRIP

Draw a vertical line at a distance of 15 mm / .59" from the axis of the hinge on both the door and the doorframe (see figure 10).

Stick the lower end of the wide strip onto the horizontal pencil line at the bottom of the doorframe. Press the strip firmly into place to ensure optimal adhesion.

**Attention:** Ensure that the edge of the wide strip runs exactly along the pencil line drawn on the doorframe

### CLICK STRIP

Stick the lower end of the click strip onto the horizontal pencil line, starting at the bottom of the door. Press the strip firmly into place to ensure optimal adhesion.

**Attention:** Ensure that the edge of the click strip runs exactly along the vertical pencil line drawn on the door.

If the wide and click strips have been mounted properly, you will be able to click the strips together at the top working downwards. Repeat the same mounting procedure for the wide and click strip on the other side of the door.

## PIVOT DOORS (2 WIDE AND 2 CLICK STRIPS ONLY!)

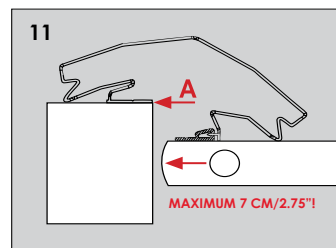
There should be a minimal 7 cm / 2.75" of space on the doorframe. The pivotal hinge should be within 7 cm / 2.75" of the doorframe.

Draw a horizontal line at a distance of 15 mm / .59" from the bottom edge on the inside of the door and extend the line to the doorframe. Do this on both sides of the door (see figure 1, other side).

### WIDE STRIPS

Apply the lower end of the wide strip onto the doorframe, starting at the bottom of the doorframe on the horizontal line. Press the strip firmly into place to ensure optimal adhesion.

**Attention:** Ensure that the edge of flat part on the the wide strip runs exactly parallel to egde of the doorframe, (see figure 11, position A).



### CLICK STRIP

Draw a vertical line from the axis of the upper pivotal hinge down to the lower pivotal hinge. Apply the bottom of the click strip onto the door starting at the horizontal pencil line at the bottom of the door. Press the strip firmly into place to ensure optimal adhesion.

**Attention:** Ensure that the opening of the click strip runs exactly along the vertical pencil line drawn on the door.

If the wide and click strips have been mounted properly, you will be able to click strips together starting at the top and working downwards. Repeat the same mounting procedure for the wide and click strip on the other side of the door.

