

80*100mm (正反面打印)

Read before installation:

Please make sure the door is closed and then install the door lever lock, or you may be locked.

Installation



Step 1: Clean the part where you need to install. (Image 1)

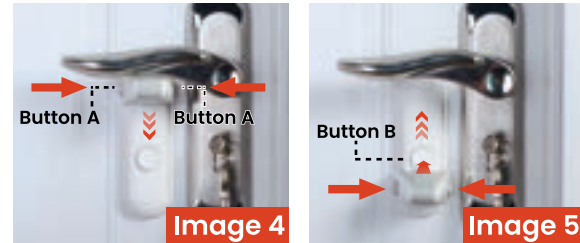
Step 2: Make sure the door lever lock is in "locked" position, and the white circle button is down. (Image 2)

Step 3: Tear off the 3M VHB tape, paste the door lever lock where you want to install, and make sure after installation, the door can't be opened. (Image 3)

⚠ WARNING!

- Please do not use the product for other purpose.
- The product can not substitute for adult and perform supervision on children.
- Please stop using in case of damage to the product.
- Assembly by an adult.

How to Use



1. If the door lever lock was not in use, please press the double buttons A and push it down, once you hear with a "click", make sure the arm can't be pushed up. (Image 4)
That means the door lever lock is unlocked.

2. If you want to use the door lever lock, please press the button B first and press the double buttons A, then push it up, once you hear with a "click", make sure the arm can't be pushed down. (Image 5)
That means the door lever lock is locked.